



Texas State Florists' Association

Shoulder Corsage
PowerPoint Presentation



LEVEL 2 HIGH SCHOOL
FLORAL CERTIFICATION



© Copyright 2024
Texas State Florists' Association
P.O. Box 859
Leander, TX 78646
United States of America

All rights reserved, including the rights of reproduction and use in any form or by any means, including the making of copies by any photo process, or by any mechanical or electronic device, printed, written or oral, or recording for sound or visual reproduction or for use in any knowledge or retrieval system or device.

High School Certification Level 2 Testing Information

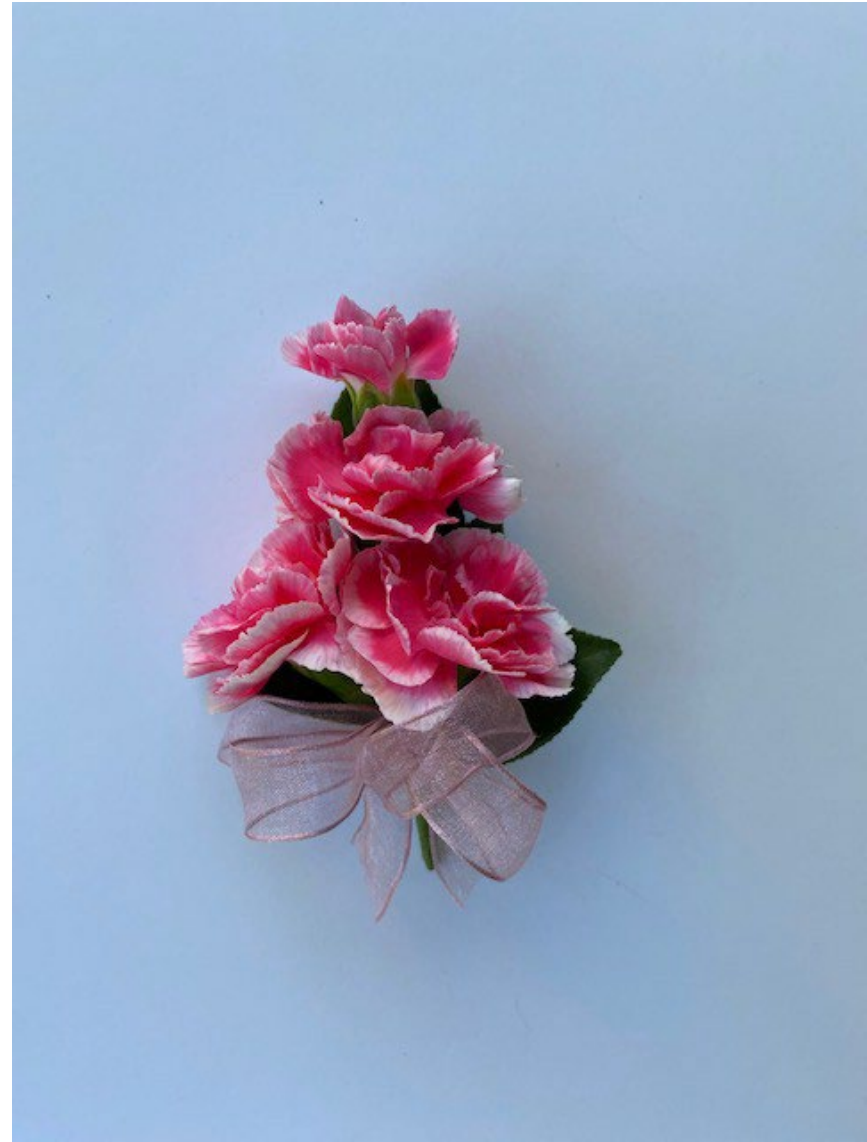
- Check the TSFA website tsfa.org for requirements.
- A \$135 testing fee must be paid by the application deadline.
- Students must have completed and passed Level I Certification.
- To be certified, students must pass all three required designs in 1 hour and 30 minutes or less. The designs are:
 1. An asymmetrical design.
 2. A vase arrangement of one dozen roses or one dozen carnations.
 3. A shoulder corsage.
- Test dates and locations will be published at tsfa.org.

High School Certification Level 2 Testing Information

- Students will be provided a 4" cube, Aspidistra ribbon, wet floral foam, a vase, floral wire, floral tape, 5/8" corsage ribbon and fresh product for three hands-on designs.
- Students **MUST** bring knives, stem cutters or shears and wire cutters.
- No tools will be provided.
- The hands-on design testing will be timed at one hour and 30 minutes.
- Retesting is available for students who do not pass one or more designs.
- The retest time will be 30 minutes per design portion (i.e., retesting asymmetrical arrangement only is 30 minutes, corsage only is 30 minutes, or one dozen roses only is 30 minutes).
- The date, place and time of testing is to be announced. Check the TSFA website at tsfa.org.
- There is a \$35.00 retesting fee.



Completed
Shoulder
Corsage

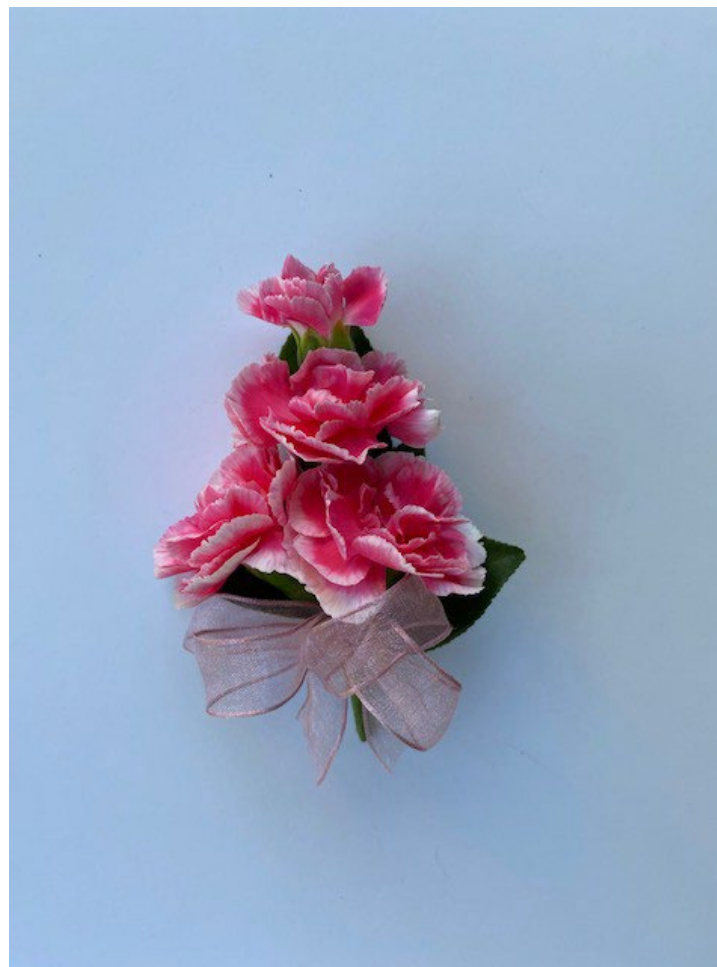


Required Materials for Level 2 Shoulder Corsage

- **One Miniature Carnation Bud.**
- **One Slightly Open Bud.**
- **Two Open Blossoms.**
- **Foliage.**
Individual leaves, such as Pittosporum, Israeli Ruscus, Holly or Elaeagnus.
- **Floral Tape**, Corsage Tape.
- **#26 or #28 Wire.**
- Ribbon for Bow.

Required Tools:

- ✓ **Wire Cutters.**
- ✓ **Clippers or Shears.**
- ✓ **Knife.**



Wiring Foliage for Use in Corsages



Stitch Wiring With #28 Wire



Hairpin Wiring With #28 Wire

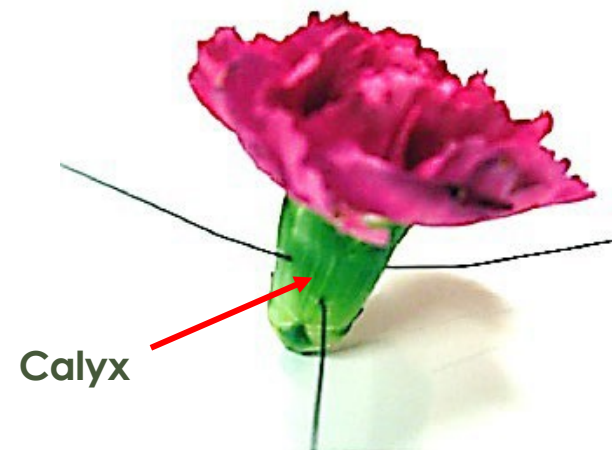
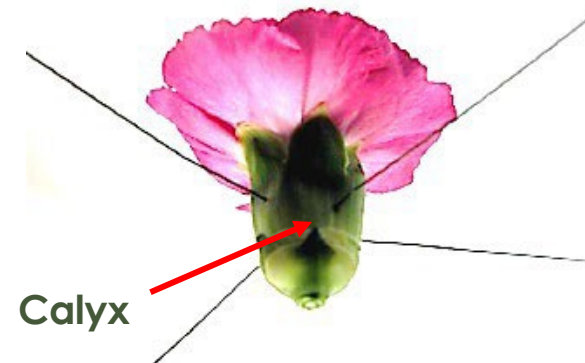
Using the stitch method. Wire and tape halfway down the wires, preparing five leaves.

Corsage Basic Wiring

Wiring of Miniature Carnations:

Use one #26 or #28 wire (cut in half). Cross pierce midway through the calyx. Take care to insert the second wire slightly above or below the first piercing.

Wire replaces the natural stem of the bloom. The stem wire will be easy to manipulate into the desired shape.



Wrap Calyx and Stem With Floral Tape, Pulling Tight and Smooth

Use light green floral tape, which is similar in color to the calyx and stem of the miniature carnation. The light green color makes the tape appear more natural. Complete wiring and taping of all four mini carnations.



Creating Corsage

Creating Corsage: Tape a leaf to the back of the bud. Slide down the backbone and place the slightly open bud with about half of the calyx from the first bud showing. Trim wire from first at different intervals to remove bulk from stem. Add another leaf along the backbone behind the second bloom and tape in place.

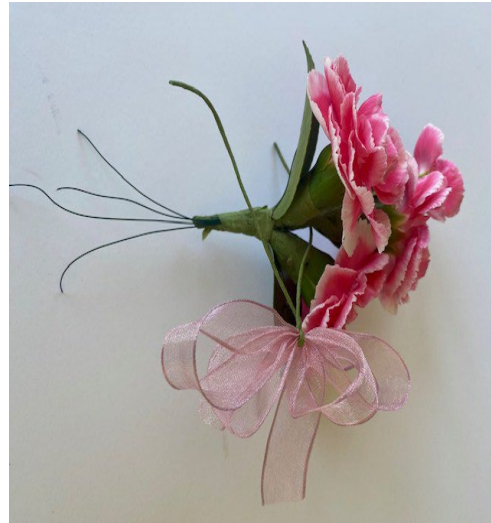


Creating the Focal Area

- Grouping of two miniature carnations creates the focal area.
- The two calyxes should come together at the point where the taped stems meet. They are added side by side.
- Spacing: More spacing is desired between #1 and #2, with less space between #2 and #3/#4. No space is between the grouping of the two blooms creating the focal point.
- Add a leaf on either side behind the third and fourth blooms and one along the backbone.



Adding Bow Below the Focal Area



Create a four loop bow with two loops on each side without a center, wiring the bow with a taped wire. To intergrate the bow with corsage, place one or both of the wires between the last two blooms. Pull the wire from the back side of the corsage to incorporate the bow seamlessly within the corsage.

Taping the Bow and Finishing the Corsage



The wires from the bow should be taped high underneath the bottom two blooms. Once they are taped, the wires should be trimmed and the stem of the corsage should be cut at an angle about 1"-1.5" inch below the last two blooms. Once trimmed, the tip of the corsage must be covered with floral tape.

Completed Corsage

