



Texas State Florists' Association

Symmetrical Triangle Arrangement PowerPoint Presentation



LEVEL 1 HIGH SCHOOL
FLORAL CERTIFICATION



© Copyright 2020
Texas State Florists' Association
PO Box 859
Leander, TX 78646
United States of America

All rights reserved, including the rights of reproduction and use in any form or by any means, including the making of copies by any photo process, or by any mechanical or electronic device, printed, written or oral, or recording for sound or visual reproduction or for use in any knowledge or retrieval system or device.

High School Certification Level 1 Testing Information

- ❖ Must enroll by deadline date, check periodically on TSFA website at tsfa.org for updated information.
- ❖ There is a \$100 testing fee if not receiving scholarship by testing.
- ❖ Must pass a 100 question Knowledge-Based (KB) exam consisting of true/false, short answer, multiple choice, and fill in the blank.
- ❖ Teachers administer the Knowledge Based Exam at their own convenience online. Exam registration and login credentials are set up by the TSFA Office.
- ❖ Must pass judging criteria for Symmetrical Triangle Arrangement & Rose Boutonniere.
- ❖ Test Dates, Test Times and Locations: Posted at [TSFA.org](https://tsfa.org), check back periodically for updated dates and times.

Additional Testing Information

- ❖ Students will be provided with fresh product, floral wire, floral tape, 1/3 brick wet floral foam, container (green design bowl) and anchor tape for hands-on designs.
- ❖ Students should bring knives, stem cutters/shears, and wire cutters. There will be no tools provided.
- ❖ Students will have 60 minutes to complete the hands-on test consisting of one complete Symmetrical Triangle Arrangement and one complete Rose Boutonniere. The online KB test is 60 minutes and timed. Teachers administer the KB test at their convenience.
- ❖ There will be not extra product provided, students **MUST** be careful with product that they are given.
- ❖ Broken stems may not be replaced during testing, may need to wire stems. Points will not be counted off for inferior product, the design is judged on stem placement only.
- ❖ Strict guidelines and procedures must be followed.
- ❖ Retesting is available for students who do not pass the hands-on or online KB test.
- ❖ There is a \$35 retesting fee per test.
- ❖ Hands-on retests may be taken at scheduled test locations or proctored digitally by teachers during scheduled time. Dates, times and locations are listed at [TSFA.org](http://www.TSFA.org).



Completed Symmetrical Triangle Arrangement



Required Materials for Level 1 Symmetrical Triangle Arrangement

- ✓ 9 carnations
- ✓ 1/3 bunch statice
- ✓ 11 stems of Leather Leaf Fern
- ✓ 1 container
- ✓ Floral Foam
- ✓ Anchor Tape
- ✓ #21 or 22 wire
(for measuring and fixing broken carnation stems)

Required Tools:

- ✓ Wire Cutters
- ✓ Clippers/Shears
- ✓ Knife
- ✓ Band Aids

Note: There will be NO TOOLS PROVIDED for testing.
Students and teachers must bring their own tools.



Prepare Container for Design

- 1) Take 1/3 block wet floral foam, and 2 pieces of 1/4" anchor tape and secure Oasis Floral Foam into the container, also known as the green design bowl.
- 2) Once the floral foam is in the container, slice off the front corners of the floral foam for better insertion of carnation stems into front corner area.
(Suggestion Only)



FRONT VIEW

Insert Carnations

- ❖ Cut stems at an angle
- ❖ Stems must be secure in flora foam below water line
- ❖ There should be no re-insertions
- ❖ Must develop Symmetrical Triangle
- ❖ Be sure to carefully measure before cutting the stems
- ❖ Develop the Skeleton of the design in steps 1-9
- ❖ May fluff tight or non-round carnations before inserting into floral foam
- ❖ Filler flowers to be inserted between carnations, placing them high and low to create depth

Cutting Stems for Insertion

Stems should be cut with a knife at about a 45° angle immediately prior to inserting each carnation stem.



Figure 1.1
SIDE VIEW
Bottom of Carnation Stem Cut at 45° angle

9 Stem Insertions into the Floral Foam to create the Skeleton

The image to the right demonstrates the placement of stems into the floral foam to form a Symmetrical Triangle Skeleton.

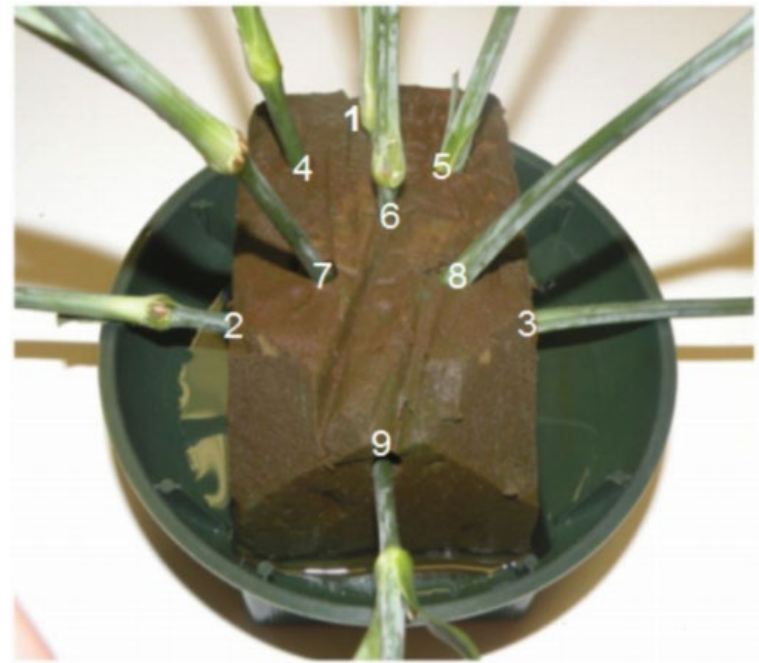


Figure 1.2
FRONT VIEW
Floral Foam with Insertions

9 Stem Insertions into the Floral Foam to create the Skeleton continued

The image to the right demonstrates the placement of stems lengthwise into the floral foam creating a Symmetrical Triangle Skeleton.

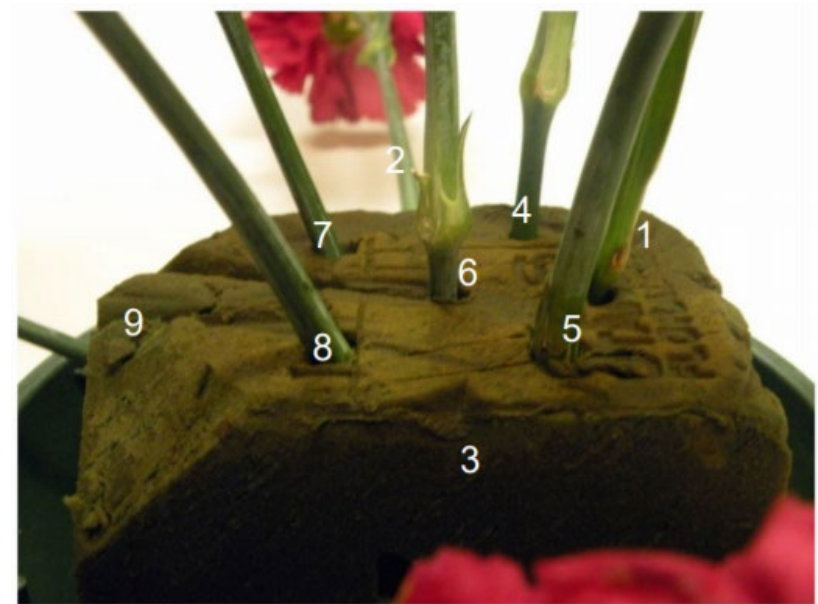


Figure 1.3
SIDE VIEW
Lengthwise Floral Foam with Insertions

Overview of 9 Stem Insertion

The image to the right demonstrates the final placement of skeletal stems to create Symmetrical Triangle Arrangement.



Figure 1.4
FRONT VIEW
9 Stem Insertion

Skeletal Stems

Notice that the yellow carnation skeletal stems in the image to the right, 1, 2, 3, 4, 5, follow a triangle shape.

The orange carnation skeletal stems 6, 7, 8, and 9 in the image form a diamond shape.

Note: You may practice by using a drawing of a triangle and diamond as a guide.

(The two different carnation colors used in this guide are for demonstration purposes only, only one color of carnation will be provided for Hands-On exam)

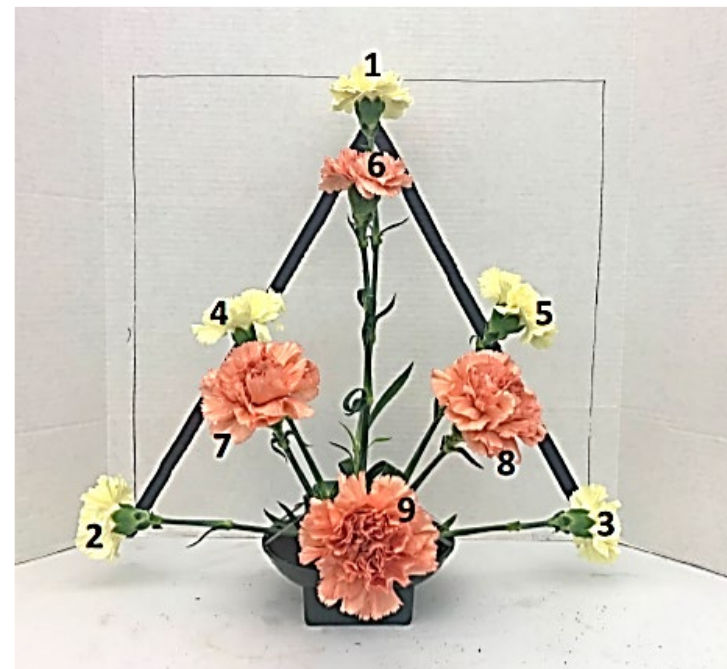


Figure 1.5
FRONT VIEW
Skeletal Stems

Insertion of Stem #1

The first stem (#1) will be approximately 18" tall and will be inserted toward the back of the foam, using the lengthwise direction of the foam.

Be sure that the stem is inserted approximately 2" into the foam as upright as possible with no more than a 95° angle.

Note: Use a 90° angle as a guide. The stem should lean no further back than shown in the example image to the right.

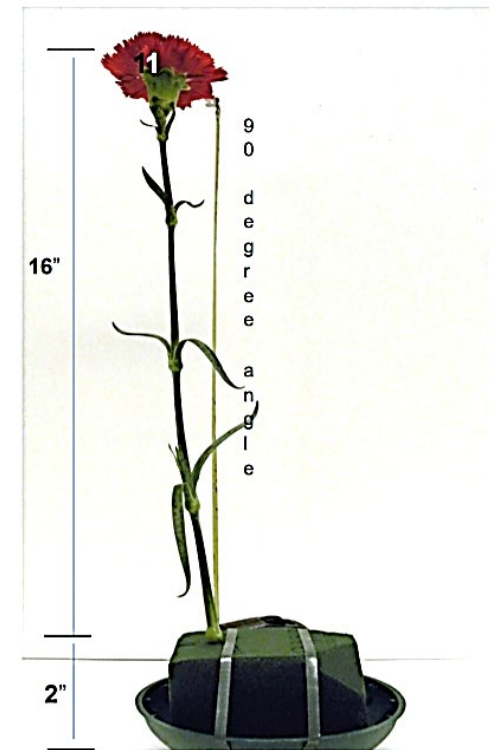


Figure 1.6
SIDE VIEW
#1 Stem Insertion at 95° angle

Insertion of Stem #2 and #3

The combination width of the two stems will be approximately 18”.

Insert the stems #2 and #3 halfway between the length of the entire block of Oasis Floral Foam in front of the vertical stem.

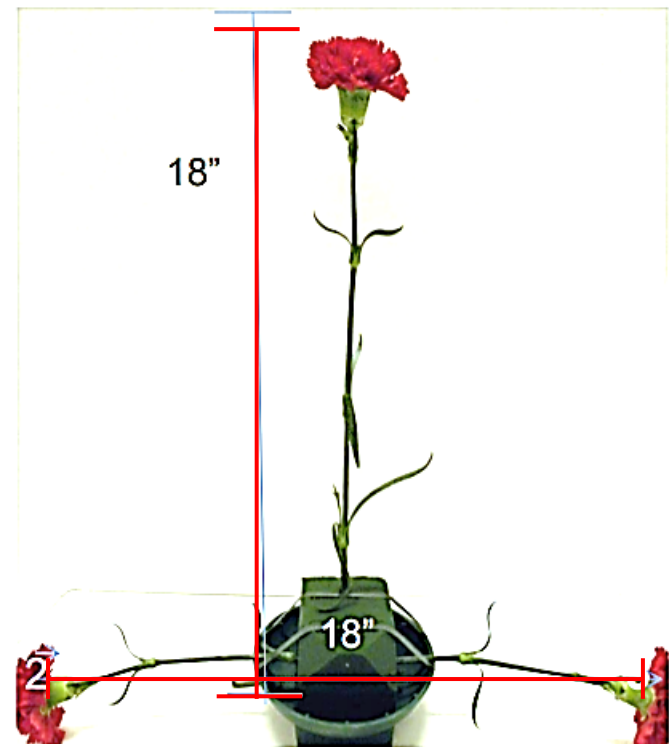
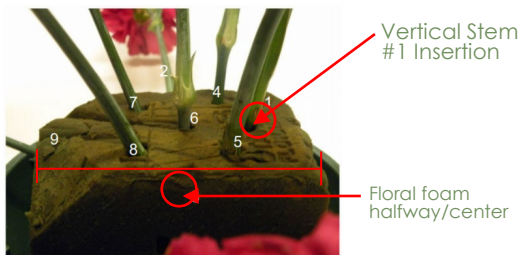


Figure 1.7
FRONT VIEW
#2 & #3 Stem Insertion, approx. 18" width

Insertion of Stem #4 and #5

Insert #4 and #5 in front of the line of #1 stem and behind the line of the #2 and #3 stems.

The stems will be inserted toward the focal point/area and will lean slightly back.

The stems will also be inserted closer toward the center of the floral foam.

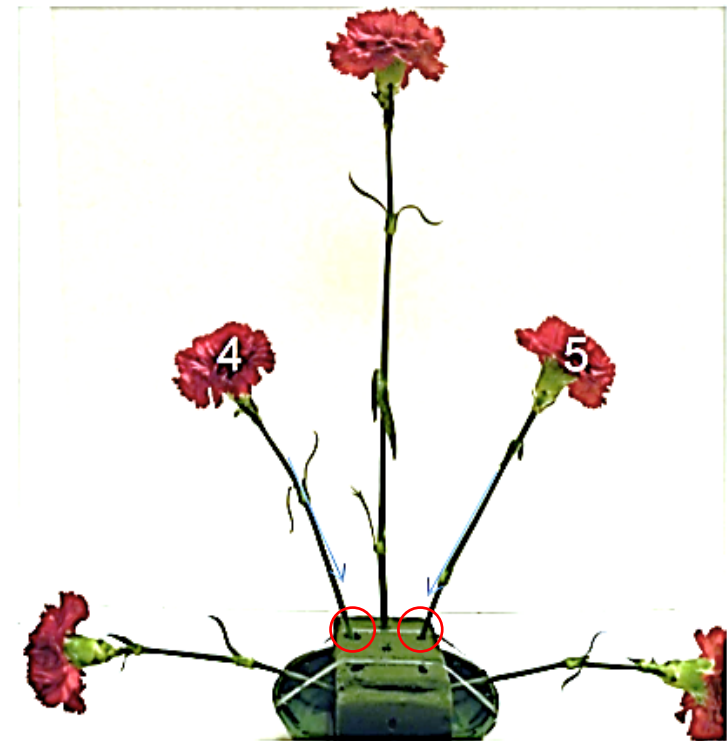
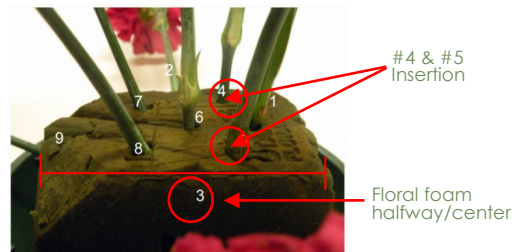
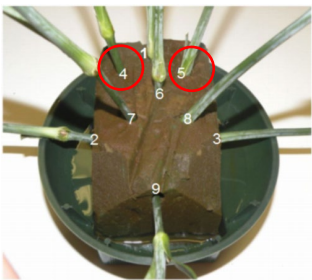


Figure 1.8
FRONT VIEW
#4 & #5 Stem Insertion

Insertion of Stem #6

The second vertical stem, #6, is placed directly in front of the #1 stem

The stems will be inserted toward the focal point/area and will lean slightly forward.

The stems will also be inserted closer toward the center of the floral foam.

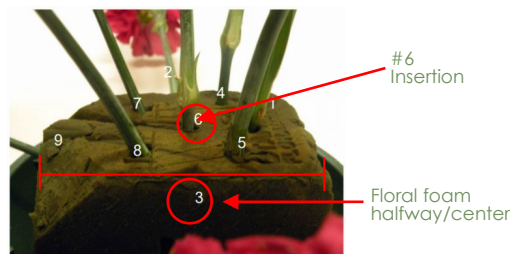
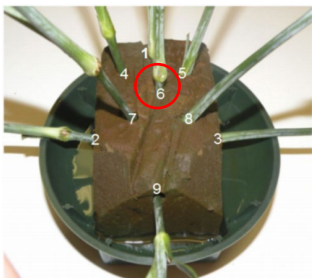


Figure 1.9
FRONT VIEW
#6 Stem Insertion

Insertion of Stem #7 and #8

The #7 and #8 stems are placed in front and toward the center of #4 and #5 stems.

The stems are inserted in a direct line toward the focal point/area creating a “V” shape from #4 and #5 insertions.

The stems will also be inserted closer toward the center of the floral foam.

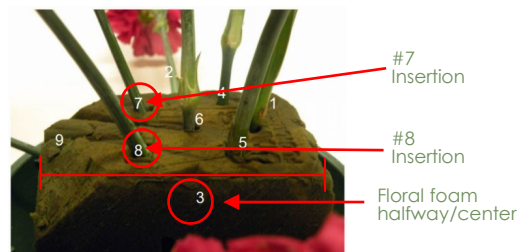
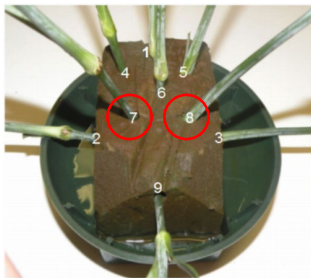


Figure 2.0
FRONT VIEW
#7 & #8 Stem Insertion

Insertion of Stem #9

This stem is placed in front of #1 and #6 stems near (but not directly on the lip of the container).

This insertion defines the focal point/area of the arrangement. All stems (flowers, foliage and filler) will radiate from this point.

Stems become shorter and tighter, as they near the focal point/area.

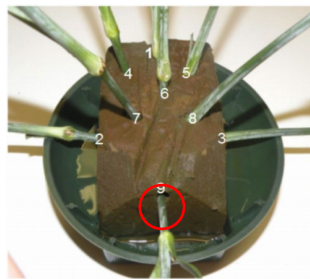


Figure 2.1
FRONT VIEW SKELETAL SYMMETRICAL
TRIANGLE ARRANGEMENT
#9 Stem Insertion

Overview of Side of Skeletal Symmetrical Arrangement

Side View of Skeletal Symmetrical Triangle Arrangement



Inserting Foliage

Note: You may add filler or foliage as the next step



Enter from right side
toward focal point



Enter from left side
toward focal point



Enter from front center
toward focal point

If adding foliage first:

- ❖ Begin adding Leather Leaf in the same manner that the carnations were inserted
- ❖ Foliage should cover the stems and Floral Foam
- ❖ When you trim the length of a stem, save the excess to be used to fill in, where needed.
- ❖ A stem must be inserted at least 1" – 2" deep into the Oasis, in order to take up water

Insert Leather Leaf Fern

- ❖ Follow same insertion patterns as carnations
- ❖ Leather should support carnation stems
- ❖ Insert Leather Leaf closely behind carnations
- ❖ Keep greenery wings for filler pieces, i.e. front spaces and to fill gaps and cover foam
- ❖ No anchor tape should be visible
- ❖ No floral foam should be showing
- ❖ Do not cut foliage into tiny pieces and insert into Floral Foam

Inserting Foliage

Photo shows side view of the symmetrical triangle and the foliage which shadows the carnation stems



Figure 2.2
SIDE VIEW WITH INSERTIONS
OF FOLIAGE

Filler

- ❖ Statice is a filler flower with multiple breaks on each stem.
- ❖ Each bloom/floret on the stem, may face a different direction.
- ❖ When designing with statice, you will need to separate the breaks so that you are using the blooms/florets in the correct direction. They must follow the lines within the arrangement.



Figure 2.3
Purple Statice

Insert Filler

- ❖ Should be placed deeper than carnations to fill in empty spaces
- ❖ If using directional fillers, they should radiate out of the design
- ❖ Insert filler securely into Floral Foam. Do not over fill design with filler; graders will count off for this; must consider price points of design, do not have to use all filler material provided.

Directional Placement of Filler

Statice blooms/florets will radiate from the focal area with the tip of the bloom pointing outward. Each stem may have multiple directions of florets on a stem. You separate and use so that each radiates correctly.



Figure 2.4

***Filler should be placed in after the Foliage**

Side and Front View of Symmetrical Triangle Arrangement



Figure 2.5 SIDE VIEW



Figure 2.6 FRONT VIEW

Back and Top View of Completed Symmetrical Triangle Arrangement



Figure 2.7 BACK VIEW
of completed Arrangement



Figure 2.8 TOP VIEW
of completed Arrangement

Completed Level 1 Symmetrical Triangle Arrangement



Completed arrangement with flowers, foliage and filler

The photo to the left displays' depth created by the filler and emphasis of the focal point created by bringing some of the filler and foliage in tighter/shorter toward the #9 carnation

Design Conclusions

- ❖ Design will be judged on stem placement, NOT product quality.
- ❖ Smaller blooms placed on outside edges of design and larger blooms to inside/interior of arrangement for depth and focal.
- ❖ DO NOT make design short and dense. If it is dense, space and proportion cannot be determined within the arrangement. The arrangement should be approximately 18" tall and approximately 18" wide. With this height and width, space will be created within the arrangement.
- ❖ Mass flowers (carnations) **MUST NOT** touch each other.
- ❖ Graders will not count off for broken carnation stems that have been re-wired together and taped correctly. Repair broken stems/carnations as needed.