



Texas State Florists' Association

Shoulder Corsage PowerPoint Presentation



LEVEL 2 HIGH SCHOOL
FLORAL CERTIFICATION



© Copyright 2023
Texas State Florists' Association
PO Box 859
Leander, TX 78646
United States of America

All rights reserved, including the rights of reproduction and use in any form or by any means, including the making of copies by any photo process, or by any mechanical or electronic device, printed, written or oral, or recording for sound or visual reproduction or for use in any knowledge or retrieval system or device.

High School Certification Level 2 Testing Information

- ❖ Check TSFA website www.tsfa.org for required information
- ❖ \$135 Testing Fee, if not receiving scholarship, by application deadline
- ❖ Must have completed and passed Level I Certification
- ❖ Must pass 3 required designs in a total time of 1 hour and 30 minutes. The designs are:
 1. An asymmetrical design
 2. A vase arrangement of 1 dz roses or 1 dz carnations
 3. A shoulder corsage
- ❖ Test dates and locations: to be announced each year

High School Certification Level 2 Testing Information

- ❖ Students will be provided with a 4 inch cube, aspidistra ribbon, oasis, vase, floral wire, floral tape, 5/8 inch corsage ribbon and fresh product for 3 hands on designs.
- ❖ Students **MUST** bring knives, stem cutters/shears, and wire cutters.
- ❖ There will be no tools provided.
- ❖ Design portion will be timed one hour and 30 minutes.
- ❖ Re-testing is available for students who do not pass any item in design portion.
- ❖ Re-test time will be 30 minutes per design portion (i.e. Re-testing Asymmetrical arrangement only: 30 minutes, Re-testing corsage only: 30 minutes, or Re-testing one dozen roses/one dozen carnation arrangement only: 30 minutes).
- ❖ Date, place, time: to be announced.
- ❖ Check TSFA website: www.tsfa.org
- ❖ \$35.00 Re-testing fee



Completed Shoulder Corsage

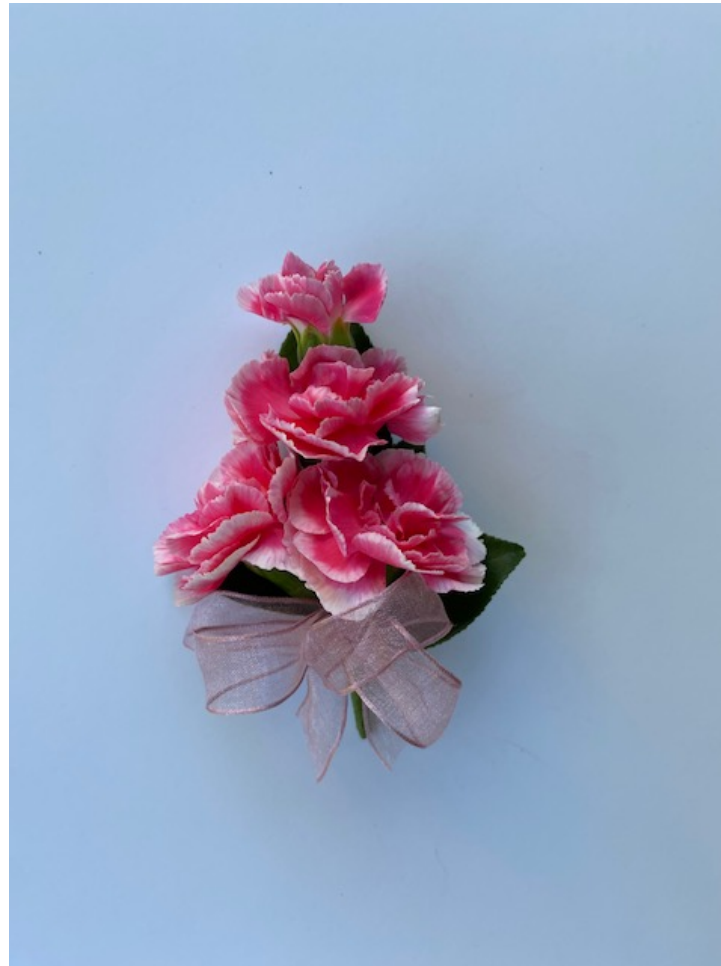


Required Materials for Level 2 Shoulder Corsage

- ✓ **One Miniature Carnation Bud**
- ✓ **One Slightly Open Bud**
- ✓ **Two Open Blossoms**
- ✓ **Foliage**
Individual leaves such as
Pittosporum, Israeli Ruscus ,Holly
or Elaeagnus
- ✓ **Floral Tape**
- ✓ **#26 or #28 Wire**

Required Tools:

- ✓ **Wire Cutters**
- ✓ **Clippers/Shears**
- ✓ **Knife**



Wiring Foliage for Use in Corsages



Stitch Wiring with #28 Wire



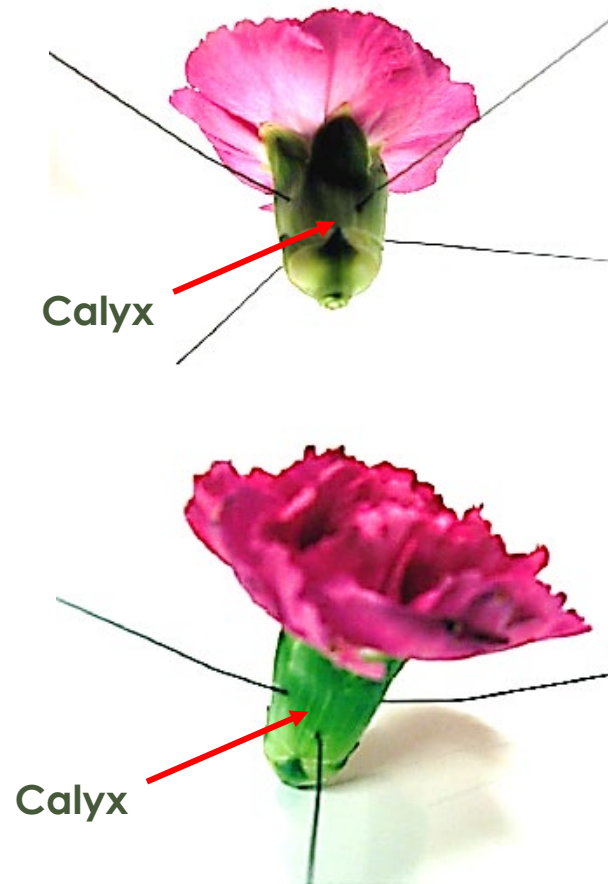
Hairpin Wiring with #28 Wire

Using the stitch method, wire and tape halfway down the wires preparing 5 leaves

Corsage Basic Wiring

Wiring of Miniature Carnations:

Use one #26 or #28 wire (Cut in half). Cross Pierce midway through calyx. Take care to insert second wire slightly above or below first piercing. Wire replaces the natural stem of the bloom. The stem wire will be easy to manipulate into desired shape.



Wrap Calyx and Stem with Floral Tape, Pulling Tight and Smooth

The use of light green floral tape is similar in color to the calyx and stem of the miniature carnation, taping with the light green makes it appear more natural. Complete wiring and taping of all four mini carnations.



Creating Corsage

Creating Corsage: Tape a leaf to the back of the bud. Slide down the backbone and place slightly open bud with about half of the calyx from first bud showing. Trim wire from first at different intervals to remove bulk from stem. Add another leaf along the backbone behind the second bloom and tape in place.

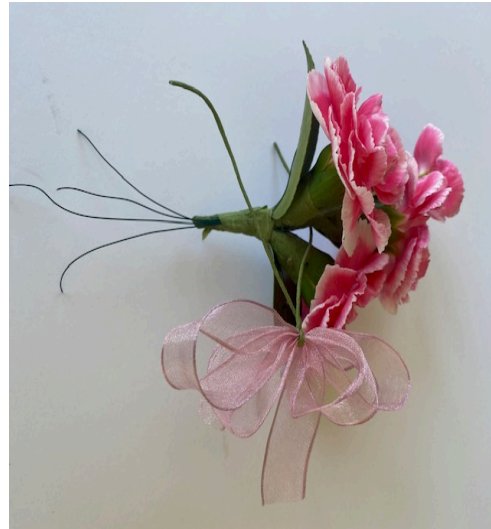


Creating the Focal Area

- Grouping of two miniature carnations creates the focal area.
- ★ • The two calyx should come together at the point where the taped stems meet. They are added side by side.
- Spacing-More spacing between #1 and #2 buds and less space between #2 bud and focal area. No space between grouping of two blooms creating the focal area .
- Add a leaf on either side behind the third and fourth blooms and one along the backbone.



Adding Bow Below the Focal Area



Create a four loop bow with two loops on each side without a center, wiring the bow with a taped wire. To intergrate the bow with corsage, place one or both of the wires between the last two blooms. Pull the wire from the back side of the corsage to incorporate the bow seamlessly within the corsage.

Taping the Bow and Finishing the Corsage



The wires from the bow should be taped high underneath the bottom two blooms. Once they are taped, the wires should be trimmed and the stem of the corsage should be cut at an angle about 1 inch - 1 1/2 inch below the last two blooms. Once trimmed, the tip of the corsage must be covered with floral tape.

Completed Corsage

