



Texas State Florists' Association

PowerPoint Presentation for High School Floral Certification Testing

Copyright 2011
Texas State Florists' Association
PO Box 859 Leander, Texas 78646
United States of America

All rights reserved, including the rights of reproduction and use in any form or by any means, including the making of copies by any photo process, or by any mechanical or electronic device, printed, written or oral, or recording for sound or visual reproduction or for use in any knowledge or retrieval system or device.



Texas State Florists' Association PowerPoint

*Presentation for High School
Floral Certification Testing of the*

Symmetrical Triangle Arrangement & Boutonniere Fall 2019

High School Certification Testing Information

- **Must enroll by deadline date, usually in the middle of January, check periodically on TSFA website at tsfa.org for updated information.**
- **There is a \$100 testing fee if not receiving scholarship by testing.**
- **Must pass a 100 question Knowledge-Based (KB) exam consisting of true/false, short answer, multiple choice, and fill in the blank.**
- **Teachers administer the KB exam at their own convenience. It is online and set up by TSFA office.**
- **Must pass judging criteria for symmetrical design and boutonniere.**
- **Test Dates and Locations: Posted at tsfa.org, check back periodically for updated dates and times.**

Additional Testing Information

Testing Information

- Students will be provided with design bowl, 1/3 brick wet floral foam, anchor tape, floral wire, floral tape, and fresh product for hands-on design.
- Students should bring knives, stem cutters/shears, and wire cutters. There will be no tools provided.
- Students will have 60 minutes to complete the hands-on test. The online KB test is 60 minutes and timed. Teachers administer the KB test at their convenience.
- Retesting is available for students who do not pass the hands-on or online KB test.
- There is a \$35 retesting fee per test.
- Hands-on retests may be taken at scheduled test locations on the dates listed on tsfa.org.

Symmetrical Triangle Arrangement

- 9 stems of carnations provided
- 11 stems of leather provided
- 7-10 florets of statice – approximately 3 stems or 1/3 provided
- There will be not extra product provided, students **MUST** be careful with product that they are given.
- Broken stems may not be replaced during testing, may need to wire stems. Points will not be counted off for inferior product, the design is judged on stem placement only.
- Strict guidelines and procedures



A Completed Symmetrical Triangle Arrangement



Required Materials for Symmetrical

- 9 carnations
- 1/3 bunch statice
- 11 stems of Leather Leaf Fern
- Container, Floral Foam and Anchor
- Tape
- #21 or #22 wire

Tools needed:

Wire Cutters, Clippers/Shears, and Knife... Band Aids.

Note: There will be NO TOOLS PROVIDED.

Prepare Container for Design

- 1/3 block wet floral foam
- 2 pieces of 1/4" anchor tape, enough to secure oasis into bowl
- Slice off front corners of floral foam for better insertion of stems into front corner area (Suggestion only)



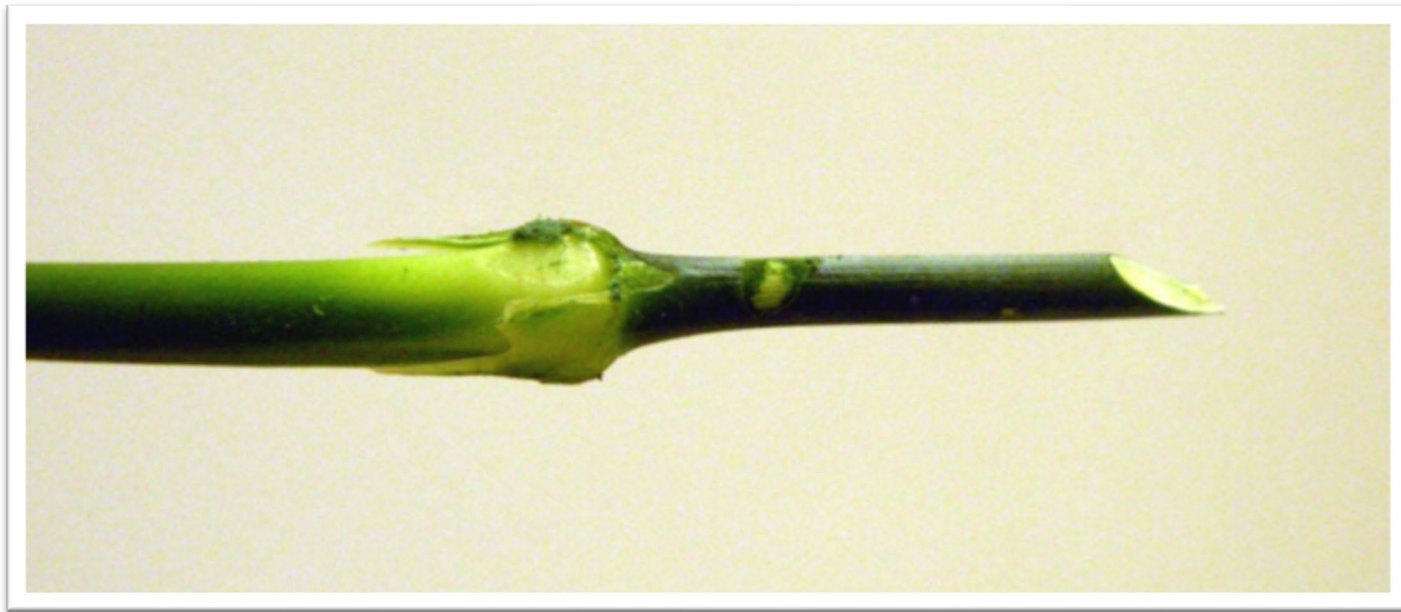
FRONT VIEW

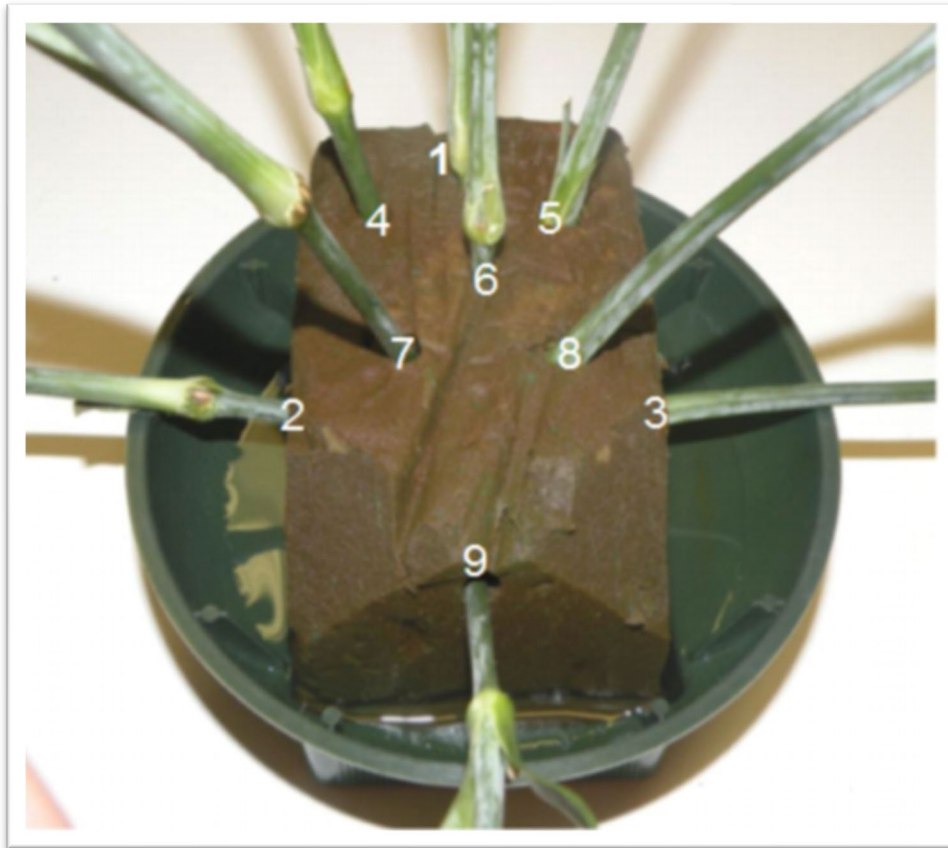
Insert Carnations

- **Cut stems at an angle**
- **Stems must be secure in flora foam below water line**
- **There should be no re-insertions**
- **Must develop Symmetrical Triangle**
- **Be sure to carefully measure before cutting the stems**
- **Develop the Skeleton of the design in steps 1-9**
- **May fluff tight or non-round carnations before inserting into floral foam**
- **Filler flowers to be inserted between carnations, placing them high and low to create depth**

Cutting Stems for Insertion

Stems should be cut with a knife at an approximate 45 degree angle immediately prior to stem insertion into the floral foam

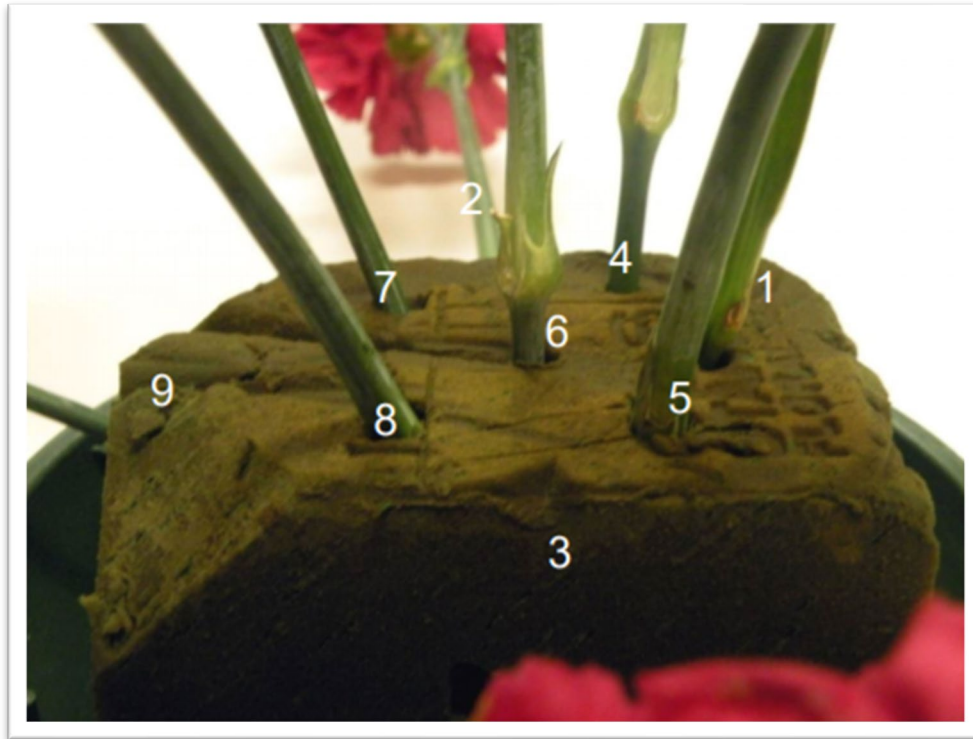




9 Stem Insertions into the Floral Foam

Placement of stems in foam to form the Symmetrical Triangle Skeleton

FRONT VIEW
Floral Foam with Insertions



9 Stem Insertions into Floral Foam (Side View)

Placement of stems into lengthwise Floral Foam creating a Symmetrical Triangle Skeleton

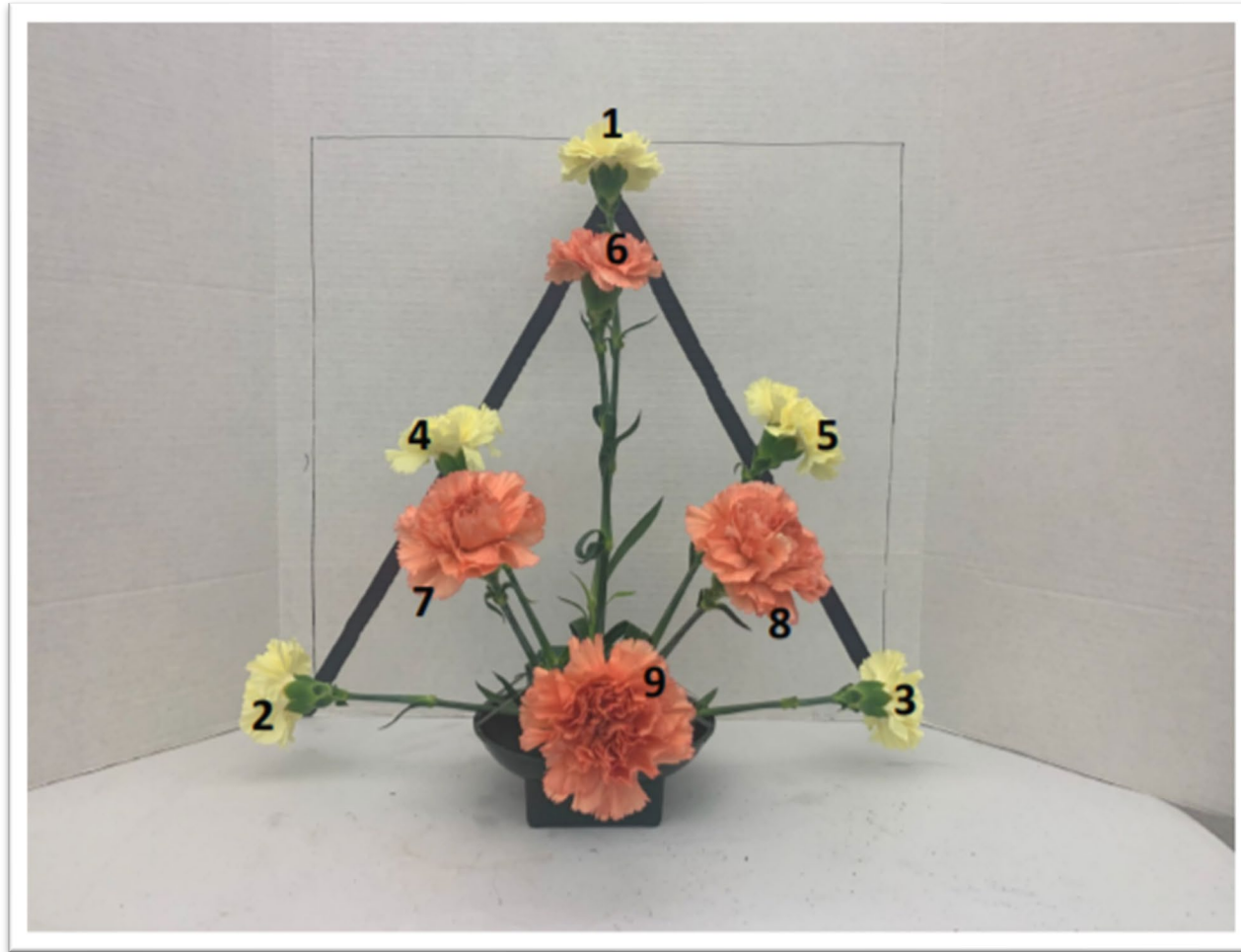
SIDE VIEW
Lengthwise Floral Foam
with insertions



Overview

Placement of skeletal stems for
Symmetrical Triangle Arrangement

FRONT VIEW

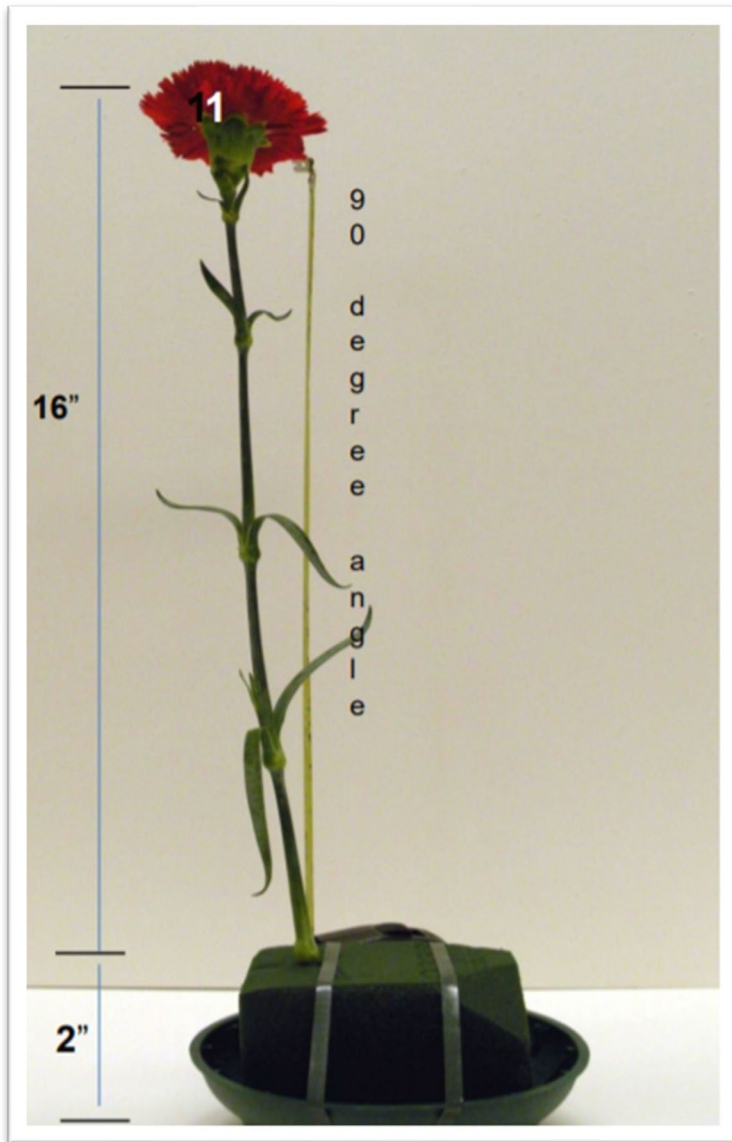


Skeletal stems – 1, 2, 3, 4, 5 – follow the triangle shape. Numbers 6, 7, 8, and 9 form a diamond shape. You can practice by using an actual drawn triangle and diamond as a guide.

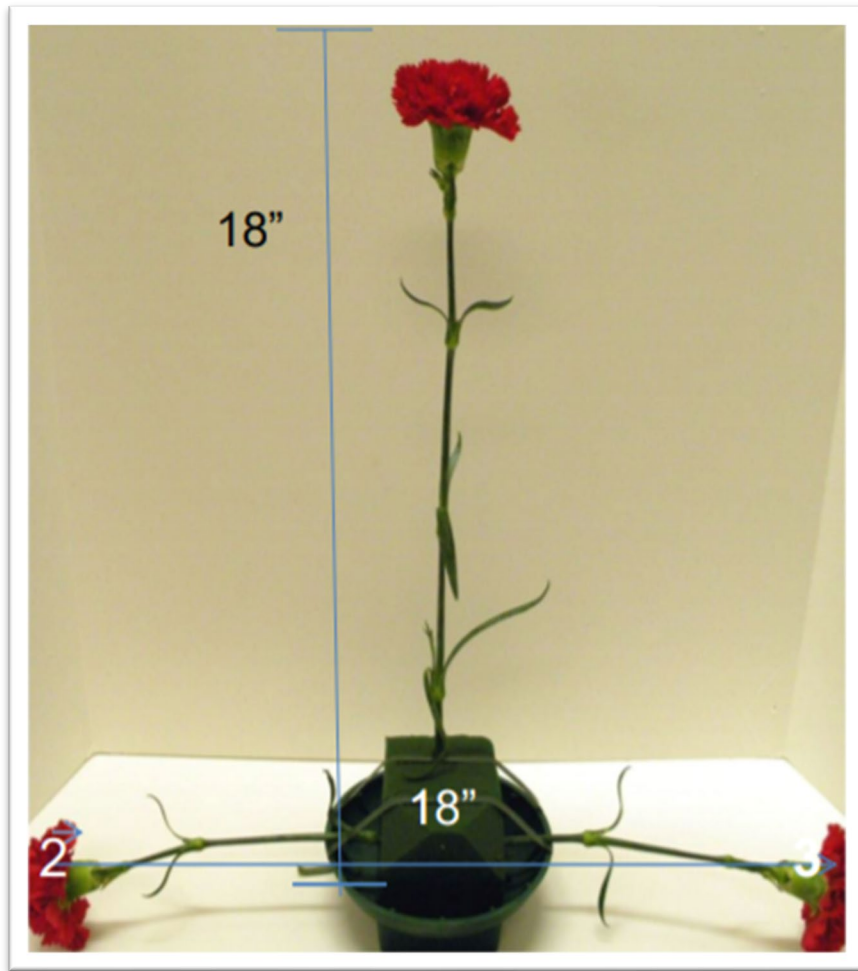
Beginning Insertions

- The first stem (#1) will be approximately 18" tall and will be inserted toward the back of the foam, using the lengthwise direction of the foam
- Insert the stem approximately 2" into the foam as upright as possible with no more than a 95 degree angle

Note: 90 degree angle to use as a guide (The stem should lay no further back than shown in example).



SIDE VIEW



Insertion of the #2 and #3 Stems

- The combination width of the two stems will be approximately 18 inches.
- Insert the stems halfway between the length of the oasis in front of the vertical stem.
- You are creating depth and space within the arrangement by placement of these insertions

Total width is approximately 18"



FRONT VIEW

Insertion of the #4 and #5 Stems

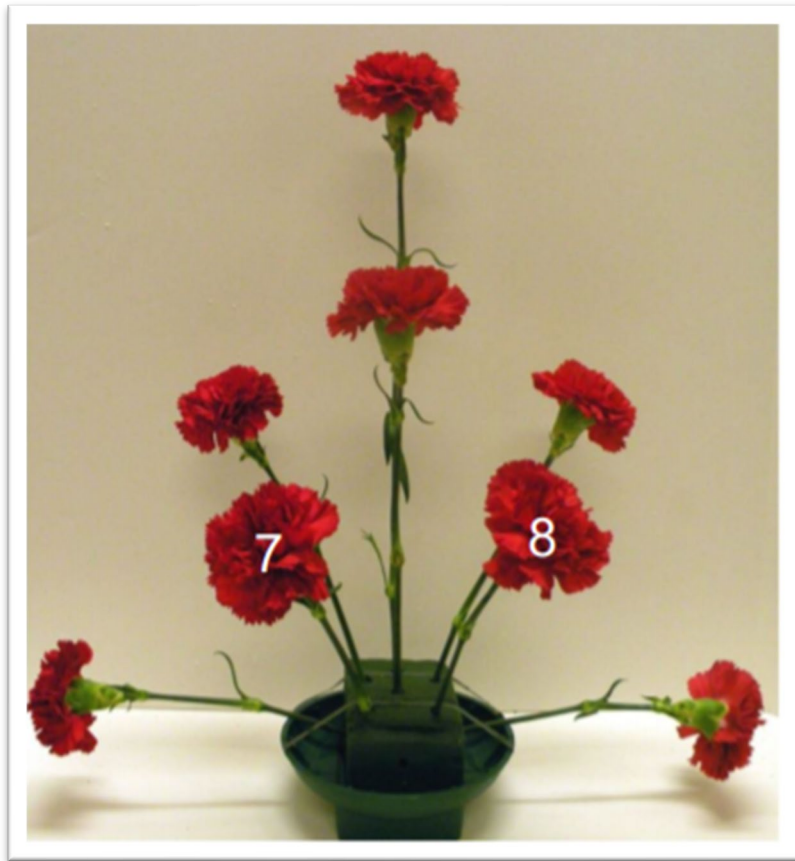
- Insert #4 and #5 in front of the line of #1 stem and behind the line of the #2 and #3 stems.
- The stems will be inserted toward the focal point/area and will lean slightly back.
- The stems will also be inserted closer toward the center of the floral foam.



FRONT VIEW

Insertion of #6 Stem

- The second vertical stem, #6, is placed directly in front of the #1 stem
- The stems will be inserted toward the focal point/area and will lean slightly back.
- The stems will also be inserted closer toward the center of the floral foam.



FRONT VIEW

Insertion of the #7 and #8 Stems

- The #7 and #8 stems are placed in front and toward the center of #4 and #5 stems.
- The stems are inserted in a direct line toward the focal point/area creating a V shape from #4 and #5 insertions.
- The stems will also be inserted closer toward the center of the floral foam.

Insertion of #9 Stem

- This stem is placed in front of #1 and #6 stems near (but not directly on the lip of the container).
- This insertion defines the focal point/area of the arrangement. All stems (flowers, foliage and filler) will radiate from this point.
- Stems become shorter and tighter, as they near the focal point/area.



Front View of Skeletal
Symmetrical Triangle Arrangement



Side View of Skeletal Symmetrical Triangle Arrangement



Enter from right side toward focal point



Enter from left side toward focal point



Enter from front center toward focal point

Inserting Foliage

You may add filler or foliage as the next step

If adding foliage first:

- Begin adding Leather Leaf in the same manner you inserted you flowers
- Foliage should cover the stems and Floral Foam
- When you trim the length of a stem, save the excess to be used to fill in, where needed
- A stem must be inserted at least 1" - 2" deep into the oasis, in order to take up water

Insert Leather Leaf Fern

- Follow same insertion patterns as carnations
- Leather should support carnation stems
- Insert Leather Leaf closely behind carnations
- Keep greenery wings for filler pieces, i.e. front spaces and to fill gaps and cover foam
- No anchor tape should be visible
- No floral foam should be showing
- Do not cut foliage into tiny pieces and insert into Floral Foam



Inserting Foliage

Photo shows side view of the symmetrical triangle and the foliage which shadows the carnation stems

**Side View with first Insertions
of Foliage**



Purple Statice

Filler

- ✓ Statice is a filler flower with multiple breaks on each stem.
- ✓ Each bloom/floret on the stem, may face a different direction.
- ✓ When designing with statice, you will need to separate the breaks so that you are using the blooms/florets in the correct direction. They must follow the lines within the arrangement.

Insert Filler

- **Should be placed deeper than carnations to fill in empty spaces**
- **If using directional fillers, they should radiate out of the design**
- **Insert filler securely into Floral Foam. Do not over fill design with filler; graders will count off for this; must consider price points of design, do not have to use all filler material provided.**

Directional Placement of Filler

- Statice blooms/florets will radiate from the focal area with the tip of the bloom pointing outward. Each stem may have multiple directions of florets on a stem. You separate and use so that each radiates correctly.



*** Filler should be placed in
after the Foliage**

Side and Front Views of Symmetrical Arrangement



SIDE VIEW



FRONT VIEW



Back View of Symmetrical Triangle Arrangement

Back view of completed
arrangement

The Completed Arrangement

- Completed arrangement with flowers, foliage and filler
- The photo shows depth created by the filler and emphasis of the focal point created by bringing some of the filler and foliage in tighter/shorter toward the #9 carnation



Top View of Finished Arrangement



Design Conclusions

- Design will be judged on stem placement, NOT product quality
- Smaller blooms placed on outside edges of design and larger blooms to inside/interior of arrangement for depth and focal
- DO NOT make design short and dense. If it is dense, space and proportion cannot be determined within the arrangement. The arrangement should be approximately 18" tall and approximately 18" wide. With this height and width, space will be created within the arrangement.
- Mass flowers (carnations) **MUST NOT** touch each other.
- Graders will not count off for broken carnation stems that have been re-wired together and taped correctly. Repair broken stems/carnations as needed

Rose Bouttonniere





Required Materials for Boutonniere

- ✓ Small Rose head (50 cm) appropriate for boutonniere (i.e. Charlotte Red Rose)
- ✓ Foliage – Small piece of Leather Leaf Fern
- ✓ #28 wire or #26 wire
- ✓ Floral Tape



Boutonniere Stem Length

- Stem length for a rose boutonniere should be proportionate to the head size, approximately 1 1/2" to 2 1/2"



Inserting Wire

- Use $\frac{1}{2}$ length of a #28 or #26 wire, pierce through the receptacle of the rose



Inserting Second Wire

- Using a second #28 or #26 wire, cross pierce the receptacle slightly lower than the first insertion

Note: using a #26 wire will make the boutonniere heavier and the stem less easy to pierce with boutonniere pin

- See example pictures for cross insertions



Securing Wires

In order to keep the wire parallel to the stem and prevent spiraling around the stem of the rose, you may want to floral tape around the lower portion of the stem to hold the wire straight and parallel to the stem before completing the taping of the entire stem.

Note: (If you have a torn or broken sepal, rotate it to the backside of the rose head. DO NOT REMOVE. If more than one sepal is bad, you may trim or re-shape, but do not trim all sepals).



Foliage

- Choose a tip from the Leather Leaf Fern that is proportionate to the size of the rose head. Foliage is an accent only and should not over power the design.



★ OPTIONAL: Wiring Leather Leaf Fern

It is not necessary to wire your foliage

However, if you choose to wire Leather Leaf Fern, create a hairpin of ½ length #28 or #26 wire



Thread through the two lower fronds and pull the wire straight down parallel to the stem.

Tape partially down the rose stem to prevent the Leather Leaf stem from spiraling around the stem and then tape over the entire rose stem.

★ *Leather Leaf is very delicate and easy to break, again, wiring is optional, not necessary.*



Tape Wired Rose Stem

- If sepals are hanging down, do not remove, simply move aside
- Tape around receptacle with floral tape, being careful to cover all insertion holes and pulled tight to top of stem
- Tape should be pulled tight and smooth all along stem
- No curled (pig tail) stems, please!
- Be sure there are no barbs or pieces of wire showing along the stem or at the bottom of the stem.

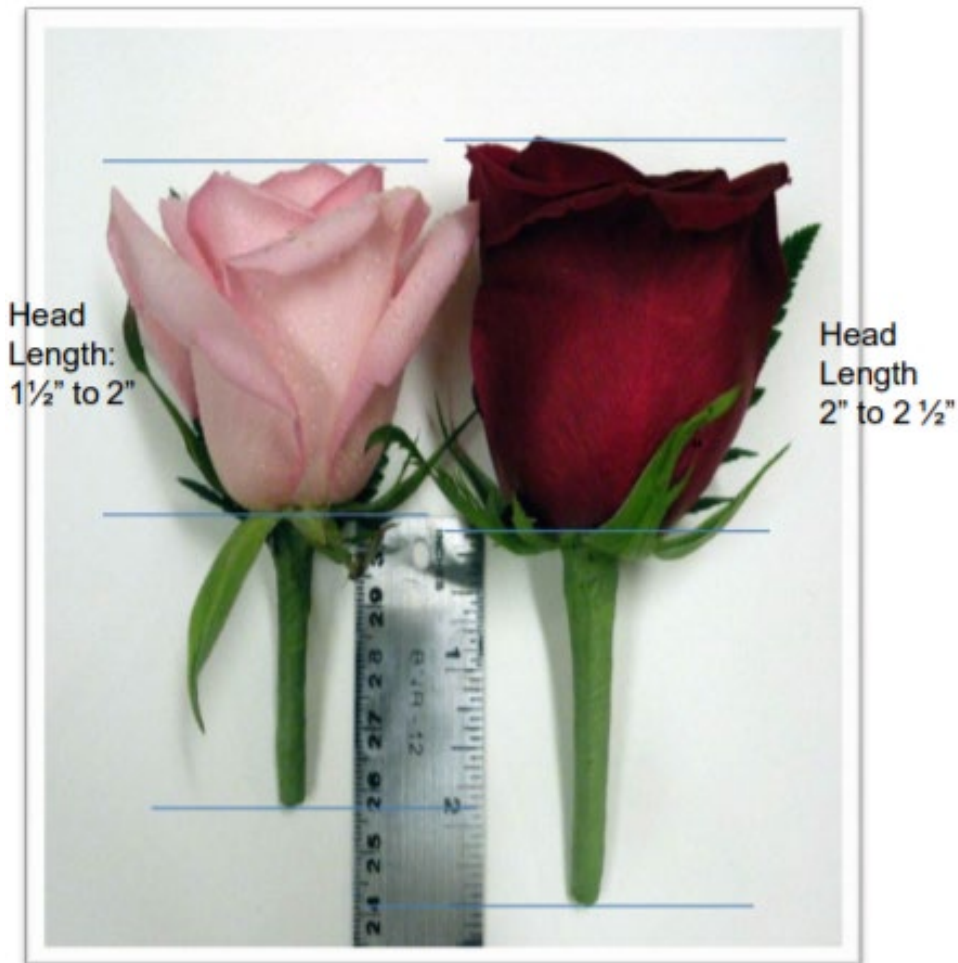


- ★ Should you choose to use Leather Leaf Fern for your boutonniere:

Tape Rose and Foliage Together

- Lay Leather Leaf Fern so that the lower end of the fronds fit close to the bottom of the rose head.
- The tip of the Leather Leaf should be just slightly above the head of the rose, within a range of 1-2 inches, maximum, in *proportion and scale* to the size of the rose head.
- Shave Leather Leaf stem half way down the stem length of the rose and then tape stem and foliage together. This prevents the stem from becoming so thick with tape!





*** REMEMBER: stem length is Proportionate to head size!**

The Stem length for a Rose Boutonniere

Reminder:

The length of the stem of your boutonniere is proportionate to the head size of the Rose.

The smaller the head size of the Rose, the shorter the stem.

The larger the head size of the Rose, the longer the stem.



Completed Rose Boutonniere



Texas State Florists' Association

*Presentation for High School
Floral Certification Testing*

Copyright 2011
Texas State Florists' Association
PO Box 859 Leander, Texas 78646
United States of America

All rights reserved, including the rights of reproduction and use in any form or by any means, including the making of copies by any photo process, or by any mechanical or electronic device, printed, written or oral, or recording for sound or visual reproduction or for use in any knowledge or retrieval system or device.